

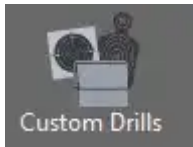
Custom Scenarios Setup

Custom Scenarios and Drills is a module that extends the simulation set with an editor that helps to create personalized scenarios composed of custom, creatively edited images.

The module is directly integrated into the LATRAS VSR console.

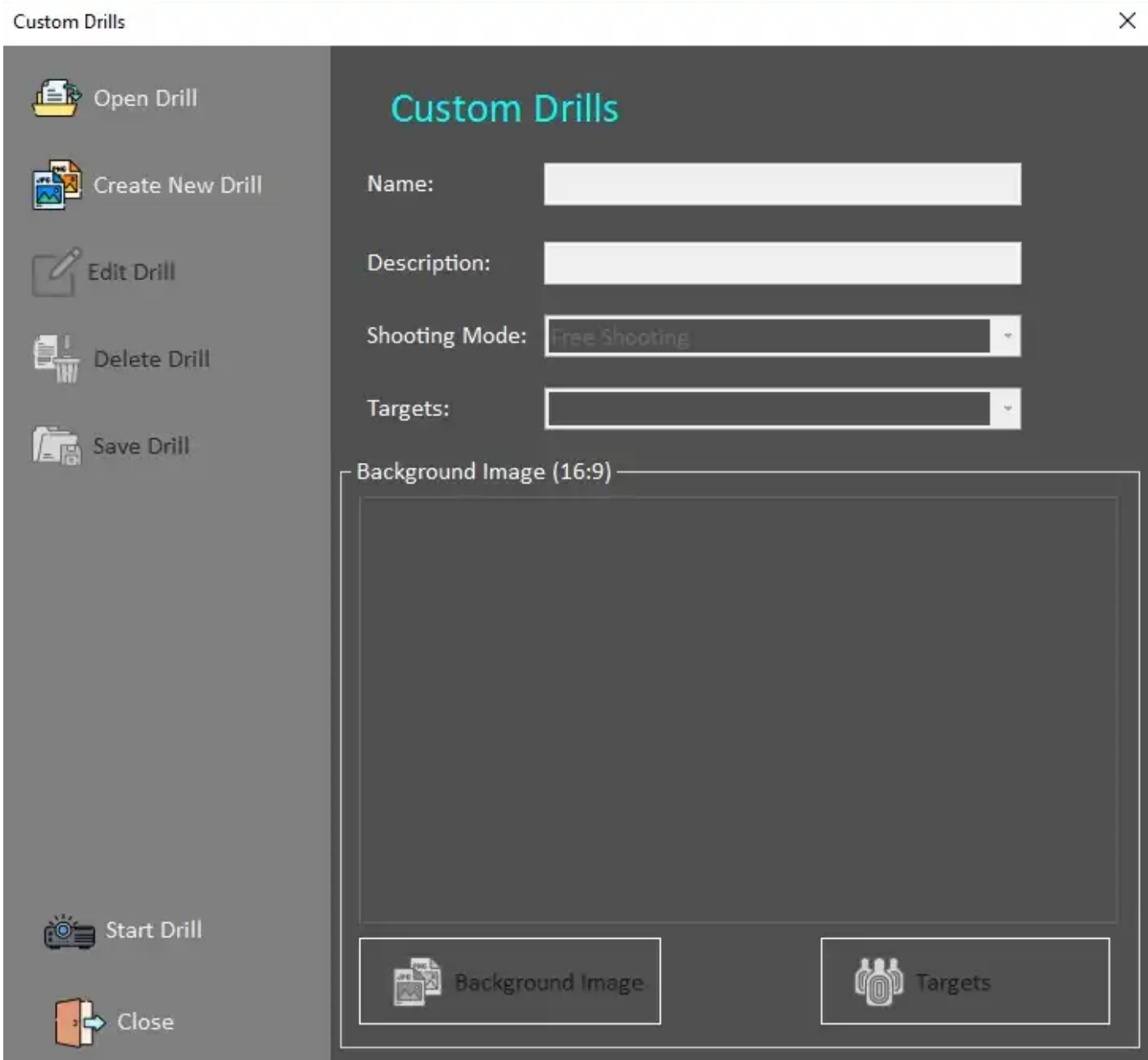
This means that no additional application needs to be installed.

In order to define Custom drills:



Click on the **Custom Drills** button.

Now dialog appears:



Open Drill - opens already defined and saved drill. Use this path for editing existing drills. To run already defined drill, use the direct access from the main page of LATRAS Hub. See the right handed side directory.

Create New Drill - builds a new drill from scratch.

Start by filling in the desired **Name** of the drill and **Description** of the Drill. Both lines need to be filled out in order to proceed.

Select Shooting mode: available options are

Free Shooting - no restrictions, no preset time limits

All targets down - all targets must be eliminated

10sec High Score - drill lasts 10 seconds, aim for maximum score within the time limit

Fast 20 Point - drills ends when 20 points are reached

10 for 10sec - 10 shots in 10 seconds drill

Shooting mode can be changed during the drill without reaching back to the Drill Edit, it is accessible from the main page for LATRAS Hub, right sided directory.

Targets

Custom Targets - select either predefined image and define your own drill conditions or load any 16:9 image and convert it into a target scene.

Precision Targets - shooting at a defined distance. The size of the target changes depending on the distance from the shooter.

Revision #3

Created 27 November 2025 12:48:01 by Editor

Updated 27 November 2025 12:50:54 by Editor