

Manual Module Installation

Manual installation is one of the methods for installing modules to the LATRAS Hub. This method does not require an internet connection; however, the installation files are required.

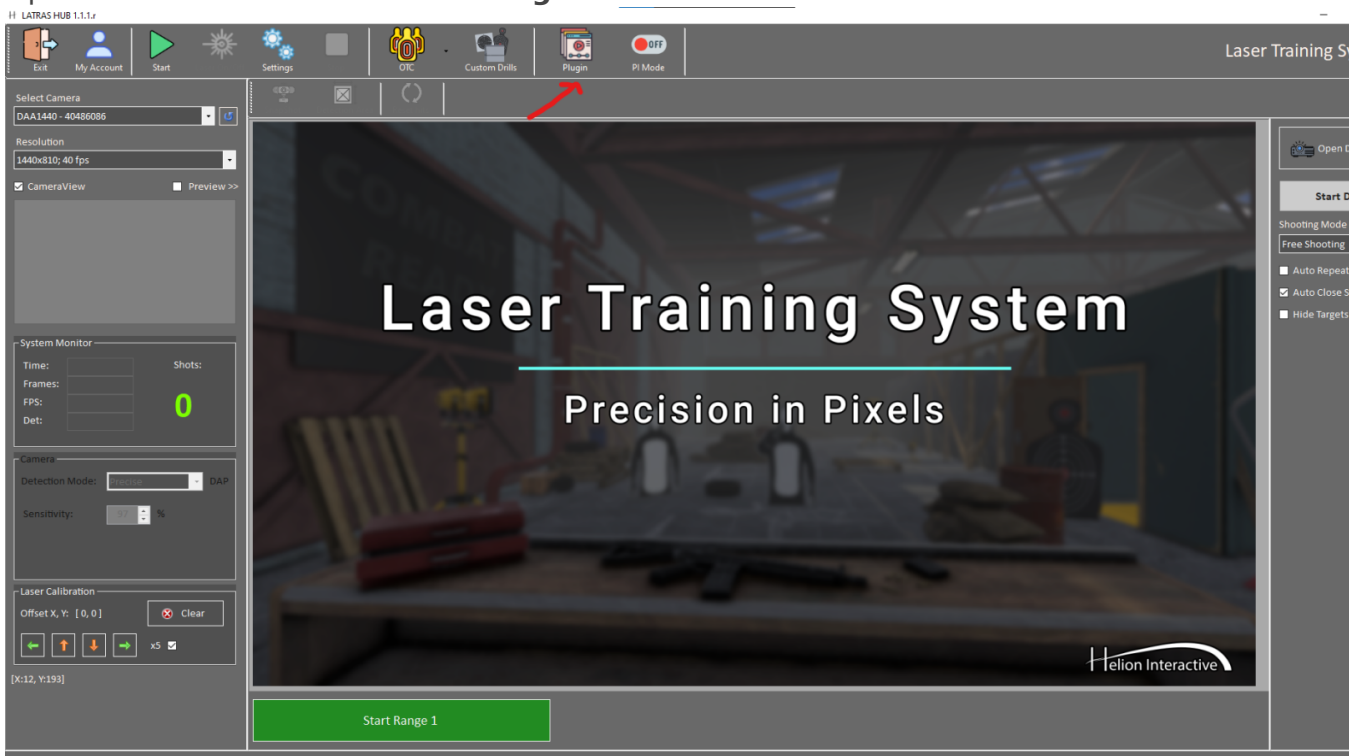
Manual module installation is not recommended as the default installation method. It should only be used for troubleshooting purposes or for installing experimental versions of our simulators.

Prerequisites

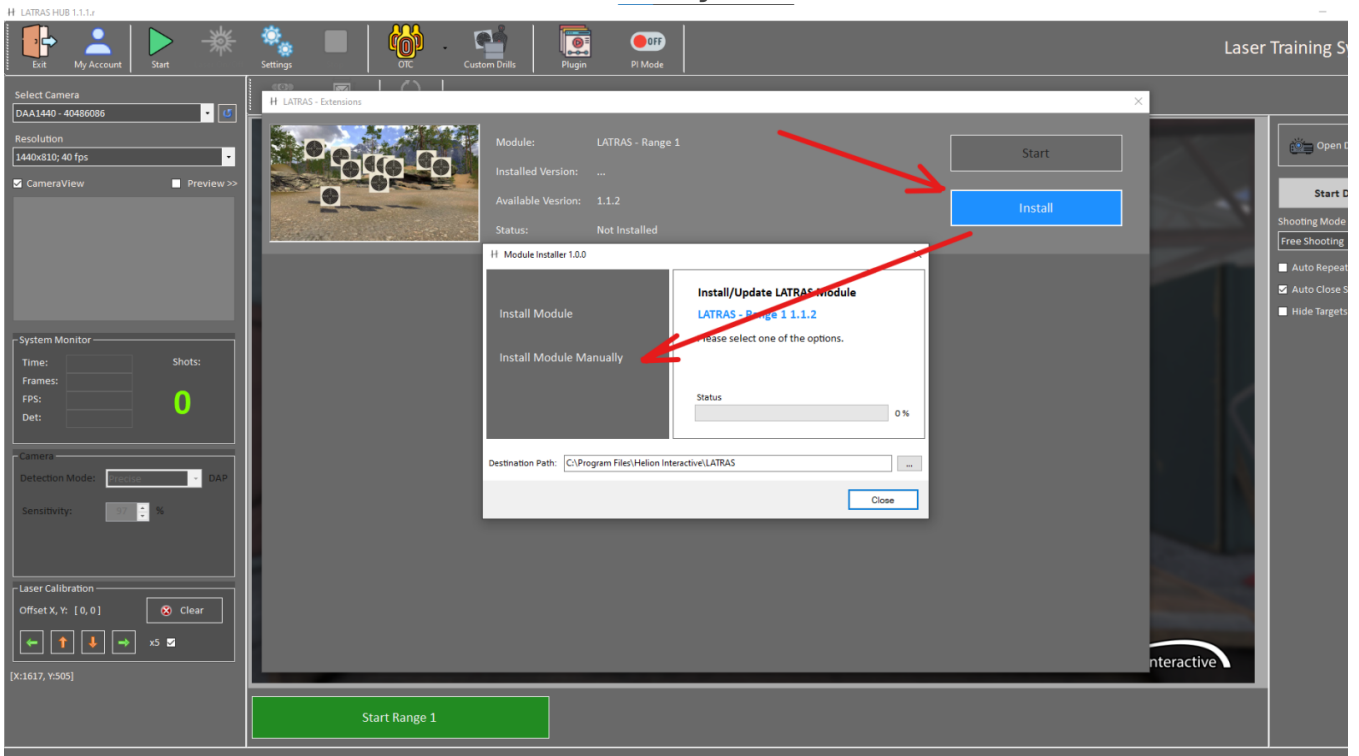
- Downloaded module installation package (ZIP file)

Installation

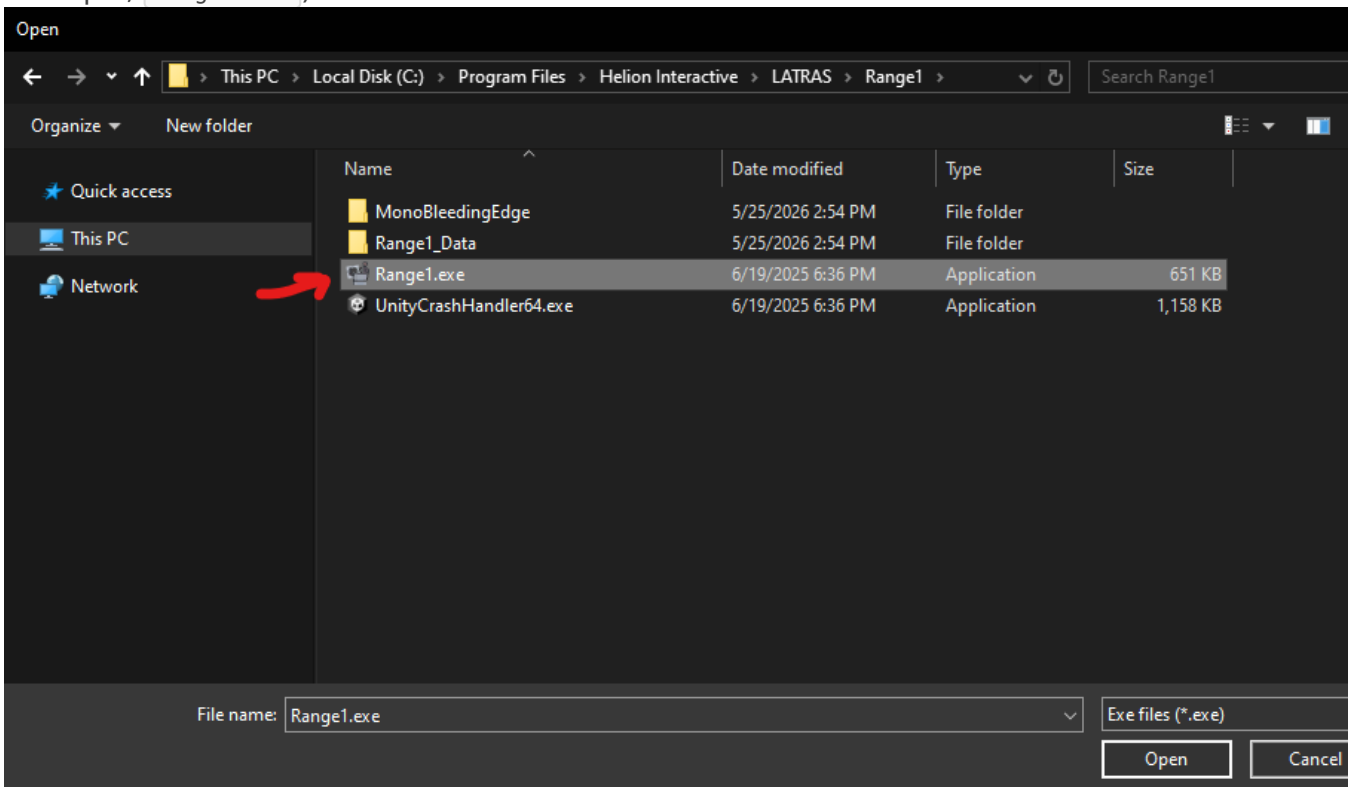
1. Extract the module files to the directory where you want the application to be installed.
2. Open **LATRAS Hub** and click the **Plugins** button.



3. Select **Install** on the module you want to install. This will open a context window. In the context window, select **Install module manually**.



4. Locate the directory where you extracted the files and select the executable file (for example, `Range1.exe`).



5. After completing these steps, the module should be installed and ready to use.

Revision #3

Created 25 May 2026 12:36:39 by Admin

Updated 25 May 2026 13:01:08 by Admin